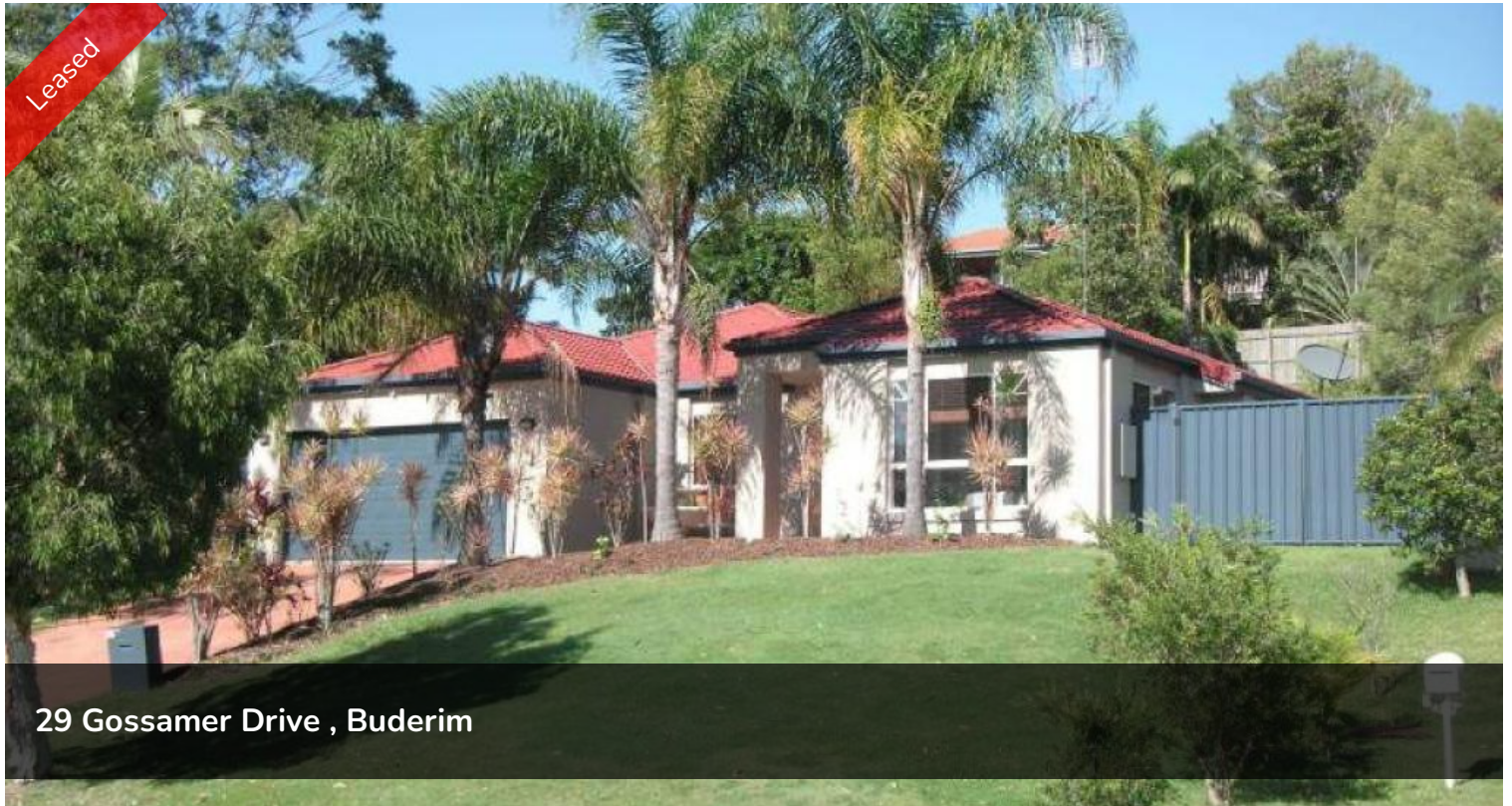


Leased



29 Gossamer Drive , Buderim



Private Family Home

Perfectly positioned within reach of all of the coast's conveniences this delight family home offers space, privacy and a quiet lifestyle.

The layout of this property is perfect for growing families with a central open plan entertaining hub and separate living space that has great indoor/outdoor flow, ideal for our Queensland lifestyle.

Features:

- * 4 Bedrooms, all with built ins and ceilings fans
- * Brand new carpets throughout
- * 2 Separate living areas
- * Air-conditioning
- * Open plan kitchen with dishwasher with plenty of storage and bench space
- * Ample storage throughout
- * Undercover outdoor entertaining
- * Double auto lock up garage
- * Small garden shed
- * Pet on application
- * Property is water efficient, tenant to pay water usage

🛏 4 🚿 2 🚗 2

Price APPLICATION
APPROVED

Property Type Rental
Property ID 101

Agent Details

Rachael Roberts - 07 5444 8188

Office Details

Mountain Creek
Suite 4, Mountain Creek Medical
Centre Karawatha Drive Mountain
Creek QLD 4557 Australia
07 5444 8188

Located within close proximity to Mountain Creek State School, Sunshine Coast University and Buderim Private Hospital.

Please contact Pam Court Realty today to organise a time to view this property on (07) 5444 8188.

The above information provided has been furnished to us by the vendor/s. We have not verified whether or not that information is accurate and do not have any belief in one way or the other in its accuracy. We do not accept any responsibility to any person for its accuracy and do no more than pass it on. All interested parties should make and rely upon their own inquiries in order to determine whether or not this information is in fact accurate.