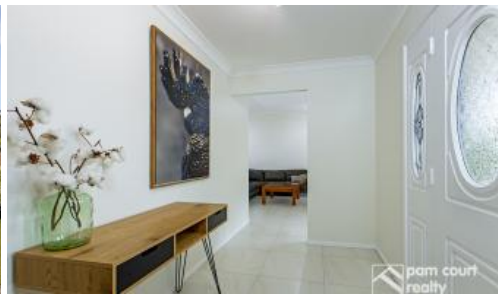


Sold



6 Sweetbrush Place, Mountain Creek



## Stylish 4 bedroom home with inground pool!

This stunning four bedroom residence has undergone a stylish makeover transforming it into a modern oasis with an emphasis on relaxed family living and entertaining.

The designer kitchen offers a timeless elegance with crisp white cupboards complimented by black handles and black sink and a concrete-look benchtop. Complete with dishwasher, large walk-in pantry, quality stainless steel appliances, breakfast bar with feature lighting and ample storage.

The extensive outdoor alfresco area overlooks the sparkling in-ground pool and can be accessed from all indoor living zones seamlessly integrating indoor and outdoor entertaining.

Nestled on a 700m<sup>2</sup> block with double gate side access to park a boat or trailer and located in a quiet cul-de-sac within walking distance to Mountain Creek Schools, shops, parks & river.

Features include:

- 4 queen sized bedrooms, all with built-in robes & ceiling fans
- Master suite complete with walk-in robe, air-conditioning unit, sliding door access to alfresco area and spacious ensuite with double vanity and lots of cupboard space

🚗 4 🛏️ 2 🚿 2 🌬️ 📏 700 m<sup>2</sup>

Price SOLD for \$677,500

Property Type Residential

Property ID 306

Land Area 700 m<sup>2</sup>

### Agent Details

Mandy Watson - 0412 988 487

Pam Court - 0412 708 313

### Office Details

Mountain Creek

Suite 4, Mountain Creek Medical

Centre Karawatha Drive Mountain

Creek QLD 4557 Australia

07 5444 8188

- Light filled lounge room with pitched ceiling
- Separate family living & dining area
- Well-appointed designer kitchen overlooking the family room
- Undercover outdoor alfresco area
- In-ground pool with ambient lighting, installed in March 2018
- Ample storage throughout the home
- Security screens throughout
- Double auto garage with internal access
- 700m2 block with double gate side access and garden shed
- Roof has been repointed & painted and external render re-painted
- Located within Mountain Creek Primary & High School catchment
- NBN Ready

This property offers a family friendly lifestyle within close proximity to all Mountain Creek amenities, and just a short drive to Mooloolaba's beautiful beach and café precinct.

The above information provided has been furnished to us by the vendor/s. We have not verified whether or not that information is accurate and do not have any belief in one way or the other in its accuracy. We do not accept any responsibility to any person for its accuracy and do no more than pass it on. All interested parties should make and rely upon their own inquiries in order to determine whether or not this information is in fact accurate.